

M.Tech • B.Tech • Diploma
ADMISSION BROCHURE



**10000+
Students
Alumni
Placed**

**Excellent
Academics**



HINDU COLLEGE OF ENGINEERING

M.Tech | B.Tech. | Diploma

Approved by AICTE, New Delhi & Affiliated to DCRUST, Murthal, Sonepat &
HSBTE Panchkula (DTE Haryana)

Run by The Sonepat Hindu Educational & Charitable Society



www.hcesonepat.org

Vision

"Grooming Technocrats, Entrepreneurs & Innovators of Tomorrow"

To provide education that transforms ideas into action, opportunities into global advantages, capabilities into successful careers and dreams into realities.

Mission

"Learning for Innovation & Management"

To create a cadre of professionals who have been imparted specialized skills, who have learnt to consider problems from a broad perspective and who have acquired a heightened sense of moral and social responsibility that their future positions of leadership demand of them.

About

Hindu College of Engineering

The Hindu College of Engineering came into existence in 1999. The institute is duly approved by AICTE and is affiliated to DCRUST, Murthal. The Institute offers 4 year B.Tech program and Diploma in CSE, ECE, EE, ME and CE.

The College has started M.Tech. Courses in ECE and CSE disciplines from the 2010-11 session and Electrical Engineering (Power Systems) from the 2011-12 session.

The opulent infrastructure of the College is spread over 10 acres of land. The Institute is well equipped with laboratories, workshops, library, spacious classrooms, cafeteria, hostels (separate for boys and girls), Transport, Medical Facility etc.

The College has a well stocked library with more than 20,000 books and International / National Journals and magazines.

DEPARTMENT



Department of Computer Science Engineering

The department is vibrant to meet the demands of computer trainers globally. The department not only imparts professional skills but also encourage innovative thinking, knowledge application, instilling professional ethics and raising awareness of social responsibilities. Our mission is to have a positive impact on society through globally competent technocrats, with the primary goal of providing high-quality education while creating long-term value. The department has developed one of the best computing infrastructure including domain-specific labs such as Java Programming, MATLAB, Oracle, Web Technology, Python, Networking and Operating System etc. The faculty and students enjoy round the clock Internet access through 100 Mbps leased line.

Our student have a good placement in Capgemini, HCL, WIPRO, SAMISHTHI, INFOSYS, AMDOC



Department of Mechanical Engineering

Our Mechanical Engineering branch is one of the best equipped branch, with the most modern machines and equipments in the region. Our workshop ensures practical machining on sophisticated metal cutting machines along with a welding shop, carpentry shop, fitting shop, sheet metal shop, foundry and forging shop. Some of the departmental labs are: Thermal Engineering lab, IC Engines lab, Fluid Mechanics Lab, Strength of Materials Lab and the Thermodynamics Lab.

Student have been placed in MBDECO International, ARJAN, IMPEX, MARC ENTEP. Roulund Braking



Department of Electronics & Comm. Engineering

The department not only grooms young engineers in the field of technology but trains them in hardware and software skill to face the best competitive industrial challenges. The department runs four years B. Tech course with honor or specialization degree in AI, IOT, Robotics and two years M. Tech course in ECE. The department encourages the students for technical and curricular activities by our dedicated and qualified faculty. The department runs various technical clubs to give exposure to the students. The department students our Alumini are placed in MNC's Namely, Infosys, TCS, HCL, IBM, BSNL, WIPRO, DRDO etc. with a handsome package & well settled across the world.



Department of Civil Engineering

Civil Engineering is the father of all engineering disciplines. Centuries of accumulated knowledge and skills makes it a delicate and often onerous task of framing the course curriculum to do justice to the reservoir of knowledge inherited from the past, while at the same time reconciling it to the dramatic changes brought about by the digital revolution. Training on software like STAAD Pro, MATLAB, E-tabs, BIM modelling, AutoCAD, MS-Project, TEKLA, enhances employability of students. Various labs are Surveying Lab, Soil Mechanics Lab, Engineering Geology Lab, Structural Lab, Concrete Lab, Transportation lab etc. Department also provides specialisation in structural and transportation engineering.

Civil Engineering past training transportation engineering. The department has wide of alumini placed in reputed industries like L&T, Ultratech, Pidilite, DLF, Jaypee etc. & in govt. sector also.

Department of Electrical Engineering

The Department of Electrical Engineering was established in the year 1999 with the approval of AICTE and excellent infrastructure and currently served by highly qualified, dedicated faculty. The Department offers 3 years Diploma, 4 years Bachelor degree course in Electrical Engineering and 2 years Master degree course in Electrical Engineering with specializations in "Power Systems". The laboratories are equipped with highly modernized equipment to provide the best practical knowledge to the students based on the recent technology. Electrical Engineering students have been placed in companies like NTPC, Power Grid, BHEL, RRB, NHPC, NDPL, TCS, INFOSYS, etc.

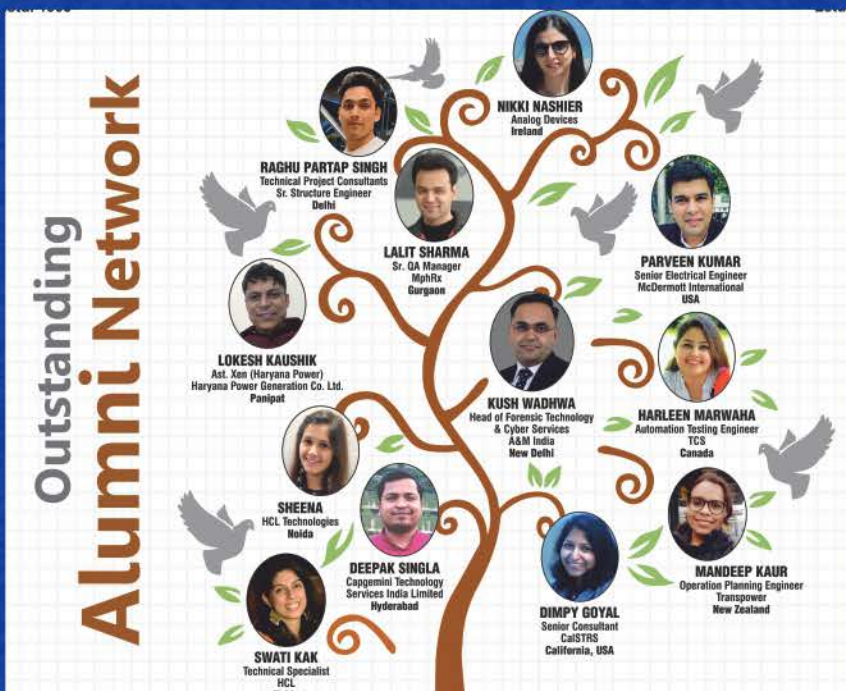
Various Labs in Electrical Engineering Department are Power System Protection Lab, Control System Lab, Electrical Machine Lab, Artificial Intelligence Lab, Electrical Drives Lab, EMMI Lab, Power Electronics Lab.



Diploma Wing :

The department is imparting training at Diploma level in five key Engineering branches of Three Years Diploma course, Civil engineering, Electrical Engineering, Mechanical Engineering, Electronics & Communication Engineering and Computer Science & Engineering. It is formally known as the Hindu Institute of Technology, Sonipat. Department promotes 'Project-based learning' to link theory with hands on practice. Students are well prepared to enter into advance study or the Engineering professions. HCE diploma holder are highly sought out by the industry because the know how to put their feet on the ground and hands on the problem.

OUR RECRUITERS



Academic Achievers @HCE



ROBOTICS

Curricular Activities @HCE

- Sports-O-Mania • ZEPHYL
- AARAMBH • INNOVATE TO ELEVATE
- GRADUATION DAY



Courses Offered @HCE

M.Tech in

•CSE •ECE •EE (Power Systems)

Intake: CSE - 24

ECE/EE - 18

Duration : 2 Years Full time regular.

Fee : 50,000 Per Annum

Eligibility : B.E / B.Tech.

B.Tech in

•CSE •ECE •ME •CE •EE

Intake: ECE/ME - 30

CSE/CE/EE - 60

Duration : 4 Years Full time regular.

Lateral Entry : 3 Years full time regular.

Fee : 76,335 Per Annum

Lateral Entry - 50,000 Per Annum

Eligibility : Passed Diploma Exam with at least 45% marks (40% for Reserve category) in any Branch of B.Tech

Diploma

•CSE •ECE •ME •CE •EE

Intake: ECE/ME/CSE/CE/EE - 30

Duration : 3 Years full time regular.

Diploma in Lateral Entry : 2 Years full time.

Fee : Diploma & Lateral Entry
32,100 Per Annum

Documents Required :

1. 10th Marksheet & Certificate
2. 10+2 Marksheet & Certificate
3. Diploma Marksheet & Diploma
4. B.Tech or DMC & B.Tech Degree
5. Copy of Aadhar Card
6. Migration Certificate
7. Gap Year Certificate / Character Certificate
8. Medical Certificate
9. Proof of Caste Certificate
10. Passport Size Photos.

Specialization/Honors Courses

Internet
of
Things

Artificial
Intelligence
& Machine
Learning

Robotics

Structural

Transportation

**“Scholarship Schemes Available for Meritorious Students,
Girl Students and SC/ST/OBC/EWS Students”**



Estd. 1999

Hindu College of Engineering

Industrial Area, Sonapat-131001, Haryana (India) | Tel.: 0130-2212756 , +91 9034090663

Email: hce.snp@hcesonepat.org | Web.: www.hcesonepat.org

Visit us at



Facebook//hceian



Instagram//hceians



Admission form available at

<http://hcesonepat.org/hces/b.tech-admission-form/>

<http://hcesonepat.org/hces/m.tech-admission-form/>

Anti Ragging Toll Free No.: 1800-180-5522

Follow us :

